

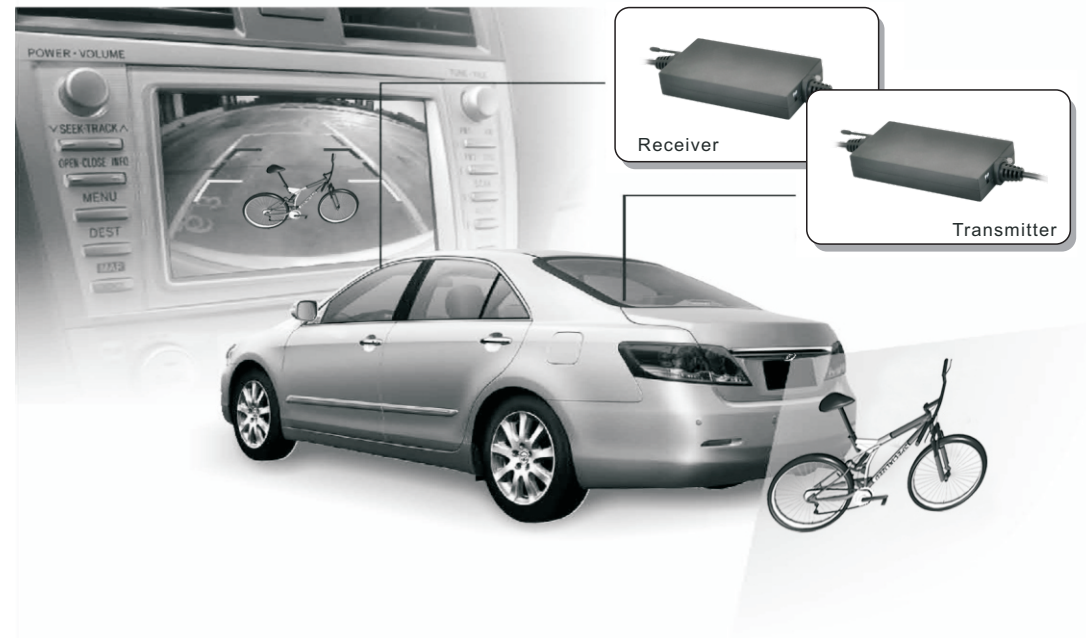
## CAUTION:

1. This product is suitable for 12V power
2. Please consult a certified installer to install product
3. The wire harness must avoid high temperature and high pressure location
4. Any exposed wire must be insulated properly
5. Check functions and test the device after installation

**RYDEEN**<sup>®</sup>  
find your road

## Wireless Installation Kit For Back Up Camera Model:DG240

## Installation/User's Manual



**RYDEEN**<sup>®</sup>  
find your road

[www.rydeenmobile.com](http://www.rydeenmobile.com)

Rydeen North America Inc.

dba Rydeen Mobile Electronics

2701 Plaza Del Amo, Suite 705, Torrance, California 90503 USA

Phone: 1-877-777-8811 Fax: 1-310-943-3778

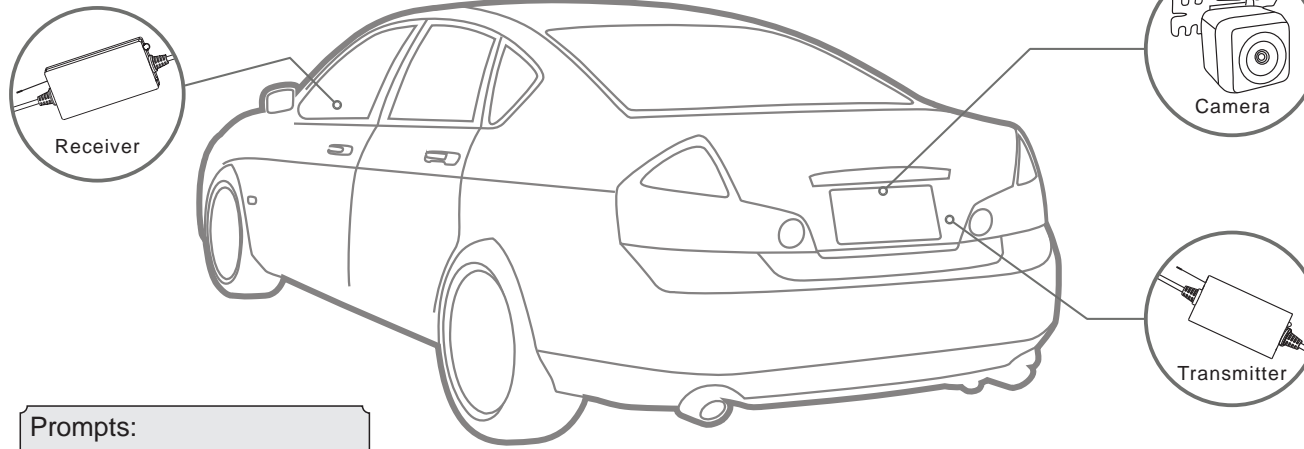
Copyright © 2013 Rydeen North America Inc. All Rights Reserved.

These materials are protected by copyright law and international treaties. Any unauthorized use, reproduction or distribution of these materials, or any portion herein, will result in severe civil and criminal penalties and fines. Violators will be prosecuted to the fullest extent of the law.

# Quick Start Guide

Model: DG240

※ DG240 = Transmitter+Receiver



## Prompts:

1. This product is suitable for 12V power
2. Please find a certified installer to install the product
3. The wire harness must avoid high temperature and high pressure location
4. Any exposed wire must be insulated

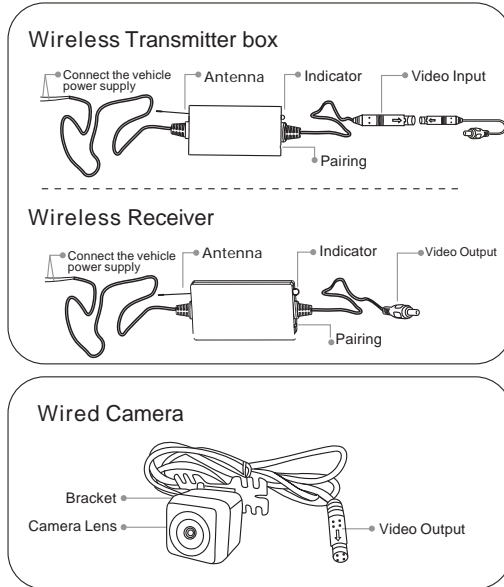
## ① Packing List:

- Wireless Transmitter box:1
- Wireless receiver:1
- RCA video to camera cable Adaptor:1
- Male to Female RCA Cable:1

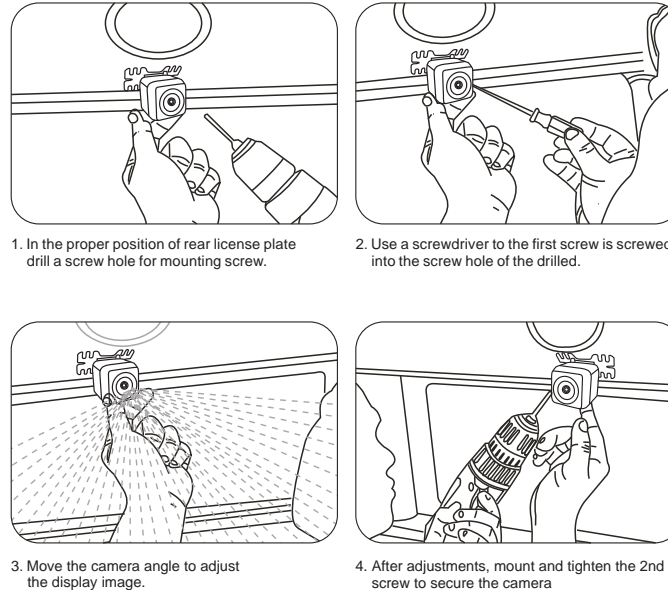
## ② Specifications:

Camera	
Image Sensor	1/4" CMOS
Effective Pixels	656 X 488
Video Format	NTSC/PAL
View Angle	80°(NTSC), 82°(PAL)
Minimum illumination	<0.5 Lux
Video output	1Vp-p±0.2@75
Power Supply	DC12V±0.5V
Consumption Current	65mA±10
Waterproof Capacity	IP66
Transmitter Frequency	2400-2483.5MHz
Data Bandwidth	4.4 (20dB BW)
Modulation/Demodulation Mode	16QAMkQ PSKkB PSK
Transmitter Power	+14dBm@16QAM EVM 5k +18dBm@QPSK EVM 8%
Receiving Sensitivity	-72dBm@QAM, -85dBm@QPSK
Unobstructed Effective Range	50M (MAX.)
Power Supply	DC 12-24V
Consumption Current	DC 12V@250mA DC24V@150mA
Dimensions (W X D X H)	66 X 35 X 12mm
Weight	60±
Transmitter	
Transmission Frequency	2400-2483.5MHz
Data Bandwidth	4.4 (20dB BW)
Modulation/Demodulation Mode	16QAMkQ PSKkB PSK
Transmission Power	+14dBm@16QAM EVM 5k +18dBm@QPSK EVM 8%
Receiving Sensitivity	-72dBm@QAM, -85dBm@QPSK
Unobstructed Effective Range	50M (MAX.)
Power Supply	DC 12-24V
Video output	1Vp-p±0.2
Dimensions (W X D X H)	66 X 35 X 12mm
Weight	60g
Operation Temperature	-10°C~+50°C/14°F~122°F
Operation Humidity	15%~85%RH
Receiver	
Image Sensor	1/4" CMOS
Effective Pixels	656 X 488
Video Format	NTSC/PAL
View Angle	80°(NTSC), 82°(PAL)
Minimum illumination	<0.5 Lux
Video output	1Vp-p±0.2@75
Power Supply	DC12V±0.5V
Consumption Current	65mA±10
Waterproof Capacity	IP66
Transmitter Frequency	2400-2483.5MHz
Data Bandwidth	4.4 (20dB BW)
Modulation/Demodulation Mode	16QAMkQ PSKkB PSK
Transmitter Power	+14dBm@16QAM EVM 5k +18dBm@QPSK EVM 8%
Receiving Sensitivity	-72dBm@QAM, -85dBm@QPSK
Unobstructed Effective Range	50M (MAX.)
Power Supply	DC 12-24V
Consumption Current	DC 12V@250mA DC24V@150mA
Dimensions (W X D X H)	66 X 35 X 12mm
Weight	60±
Transmission Frequency	2400-2483.5MHz
Data Bandwidth	4.4 (20dB BW)
Modulation/Demodulation Mode	16QAMkQ PSKkB PSK
Transmission Power	+14dBm@16QAM EVM 5k +18dBm@QPSK EVM 8%
Receiving Sensitivity	-72dBm@QAM, -85dBm@QPSK
Unobstructed Effective Range	50M (MAX.)
Power Supply	DC 12-24V
Video output	1Vp-p±0.2
Dimensions (W X D X H)	66 X 35 X 12mm
Weight	60g
Operation Temperature	-10°C~+50°C/14°F~122°F
Operation Humidity	15%~85%RH

## ③ Product Structure:



## ④ Installation Wired Camera:



## ⑤ Wiring diagram and pairing set up:

