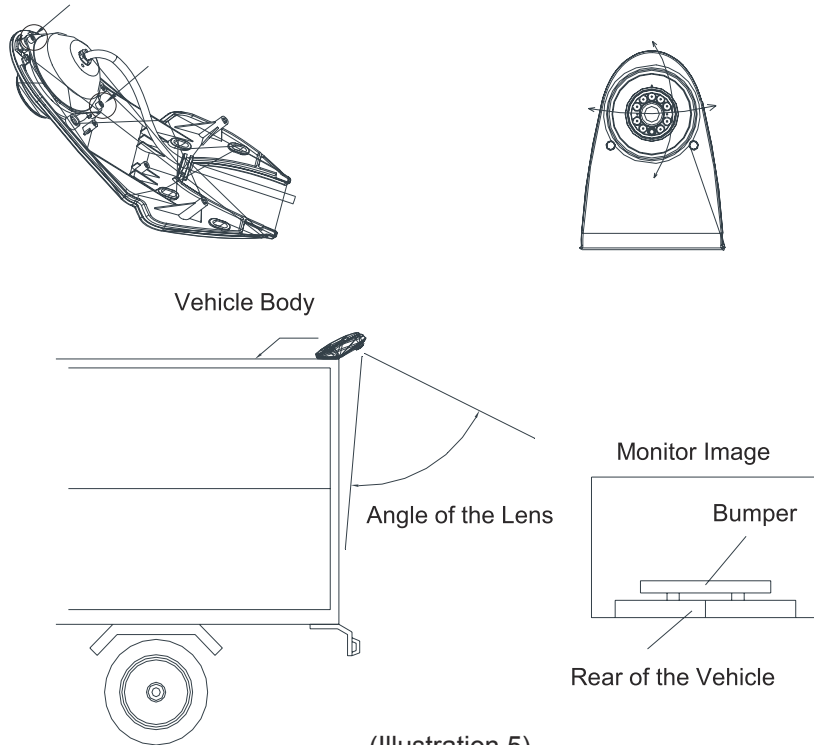
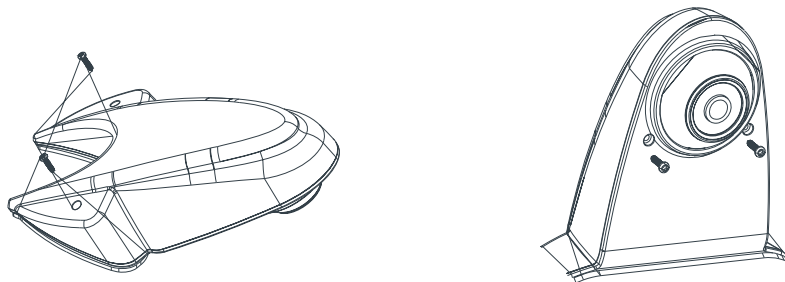


- (6) If the camera angle is not proper, loosen the KA10*2.5 cross recess head screws to adjust the ball camera angle, when it reach the viewing position to be properly displayed in the monitor(Illustration 5), lock the ball camera.



(Illustration 5)

- (5) Place the top cover onto the camera body and fix it with KA10*3 cross recess head screws. (Illustration 6)



(Illustration 6)

RYDEEN®
find your road

Owner's Manual

Top mount camera
Model: CM-T1000P



Specifications:

Image Device:	1/3" Color CMOS
TV System:	NTSC
Effective Pixels:	960 x 576 pixels
Scanning System:	2:1 Interlace
Sync. System:	Internal
Resolution:	600 TV LINES
Minimum Illumination:	0.1 Lux (day), 0 Lux (with IR)
Microphone:	Built in microphone
Horizontal Sync. Freq.:	15.734KHz
Video Output:	1.0 vp-p, 75 Ohm
Gamma Consumption:	0.45
AGC:	Auto
S/N Ratio:	+48 dB
White Balance:	Auto
Electronic Shutter:	1/60 - 1/100,000 second
BLC:	Auto
Current Consumption:	70-220MA
Power Supply:	DC12V/24V
Operating Temperature:	-22 ℉ ~ 158 ℉
Lens:	f=2.8mm, F=2.0
Lens Angle:	120 degrees

Product features:

1. Waterproof: IP68-69K
2. Nightvision distance: approx. 26-32ft (10 IR lights)
3. Day / Night sensor for automatic adjustment
4. Wider viewing angle up to 120 degrees

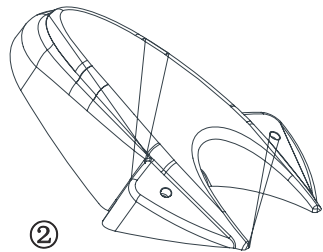
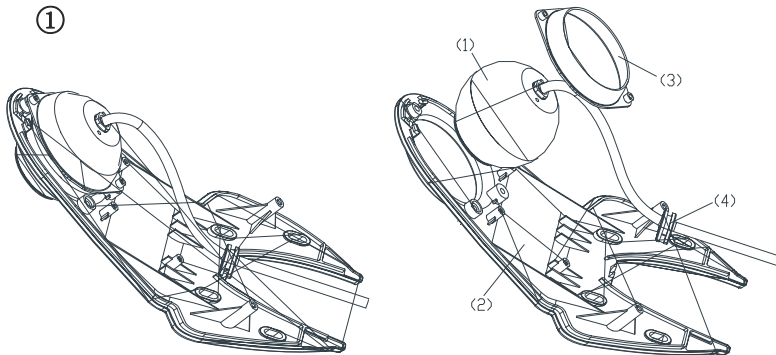
Precautions:

1. Be cautious when mounting camera and wiring near fuel tank.
2. The device is designed to work with +12/24 volt DC power supply.

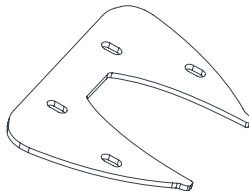
Assembly:

CAMERA

①



③



1. Camera body
(1) Ball camera
(2) Bottom cover
(3) Ring mount
(4) Rubber grommet

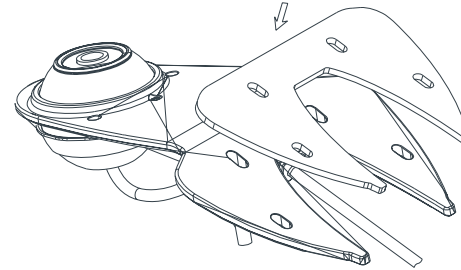
x1
x1
x1
x1

- 2 Top cover
3 Rubber pad

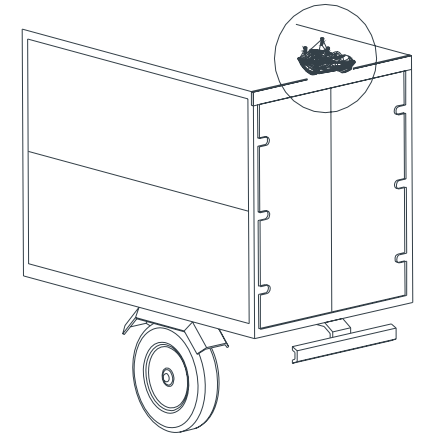
x1
x1

Installation:

- (1) Remove the double-sided adhesive from the rubber pad and stick the pad onto the camera body (Illustration 1).
- (2) Find a proper location for installation and fix the camera body with the 4x TA4*16 cross recess head screws to the vehicle (Illustration 2)

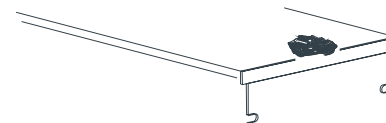


(Illustration 1)

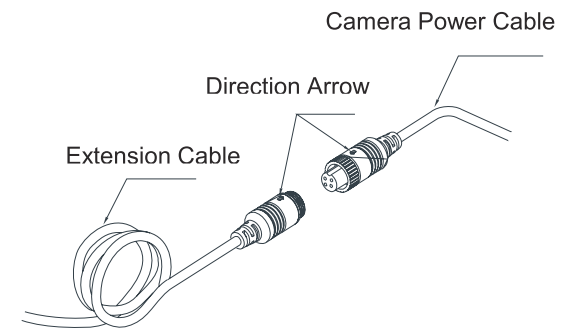


(Illustration 2)

- (3) Drill a $\Phi 20\text{mm}$ hole underneath the tail part of camera (Illustration 3).
- (4) Insert the camera power cable into the hole to be connected with the monitor, commonly through an extension cable (illustration 4).



(Illustration 3)



(Illustration 4)